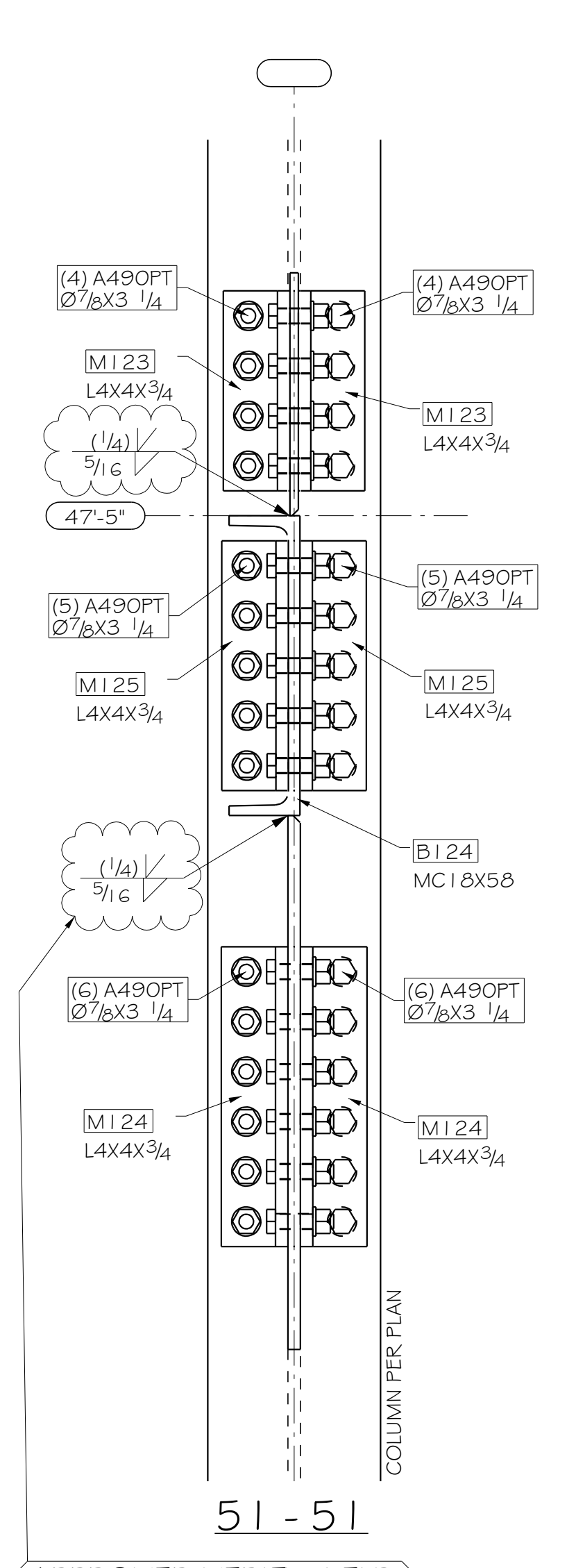
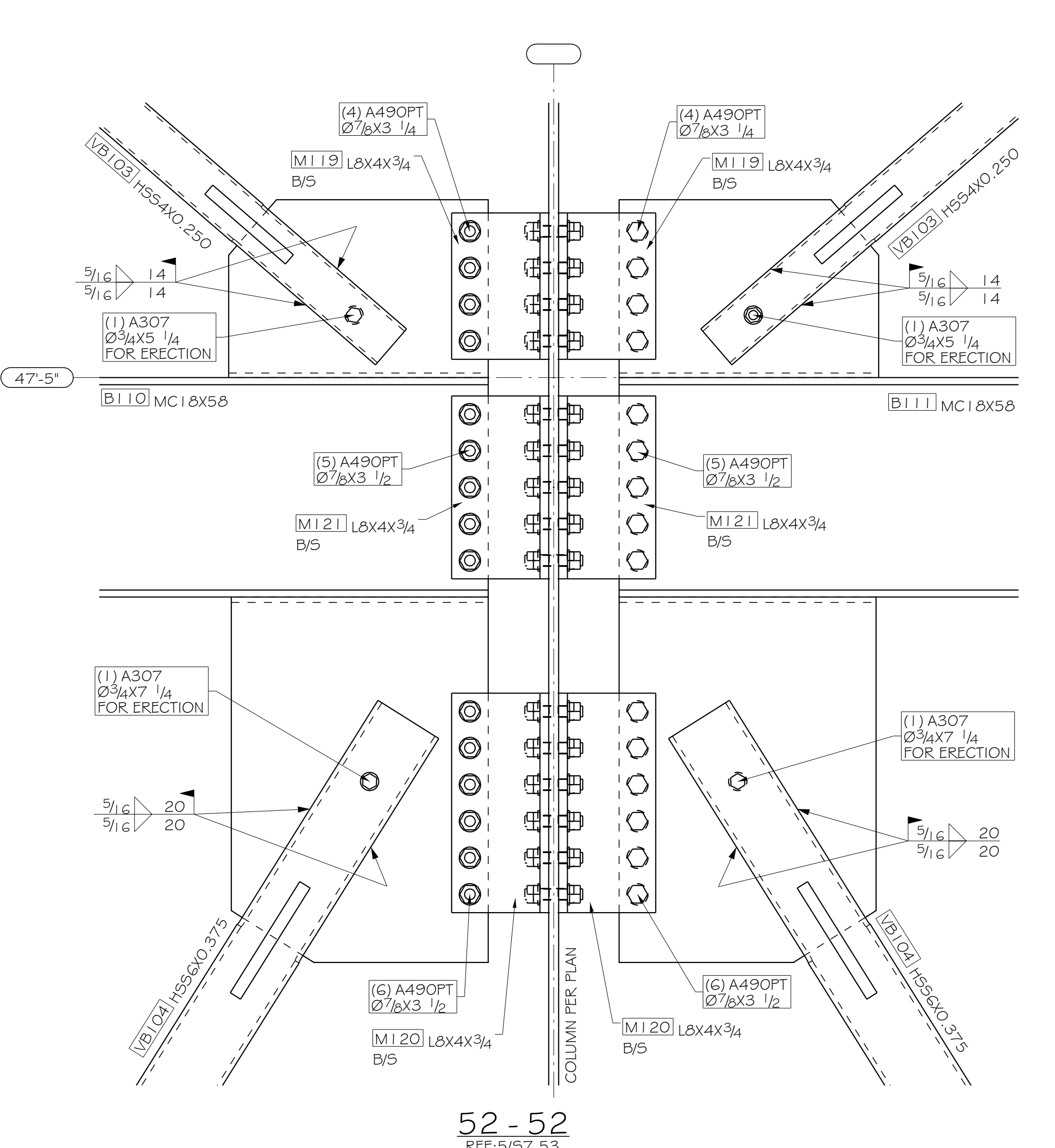


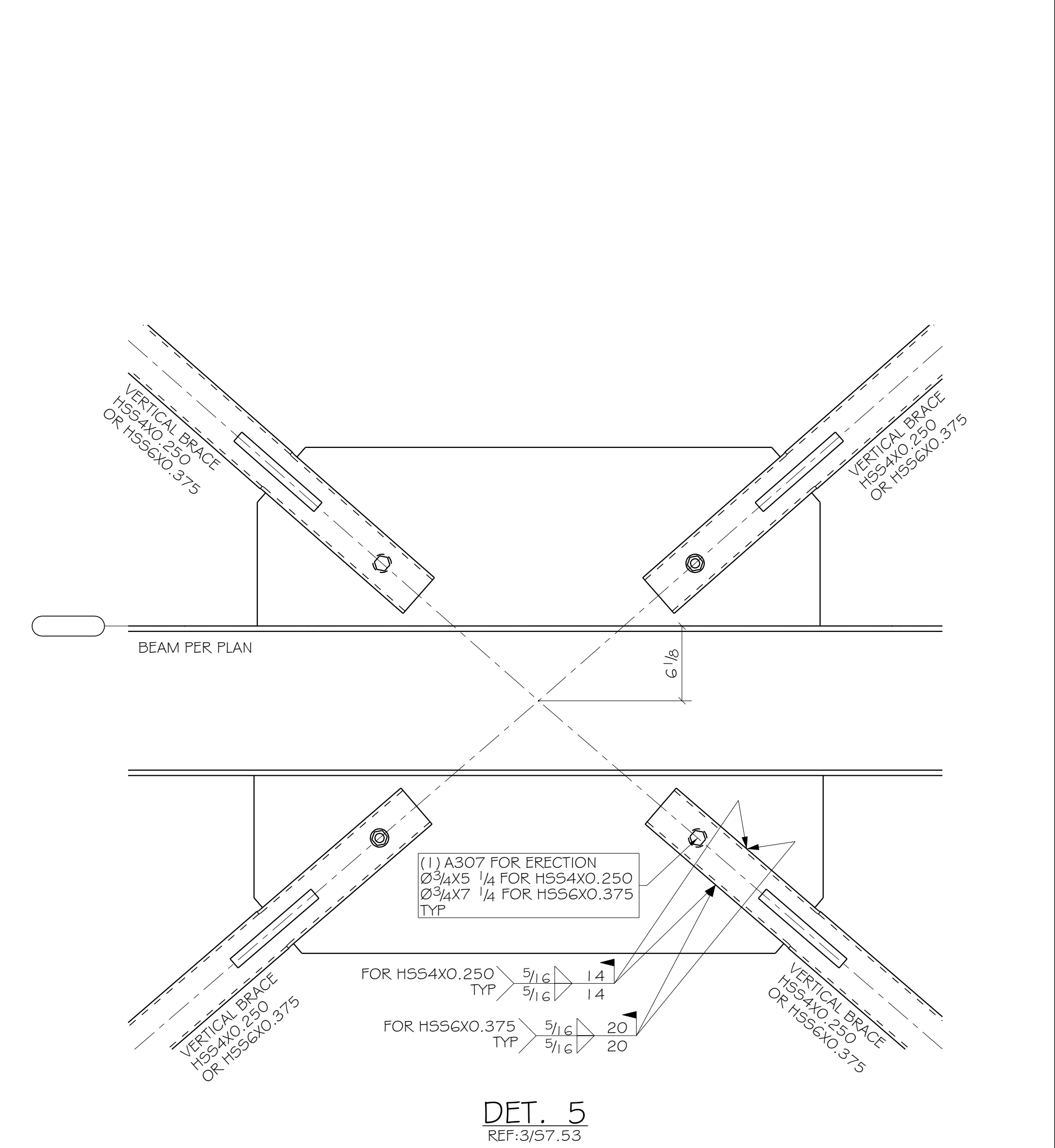
DET. 3  
REF: 4/57.53



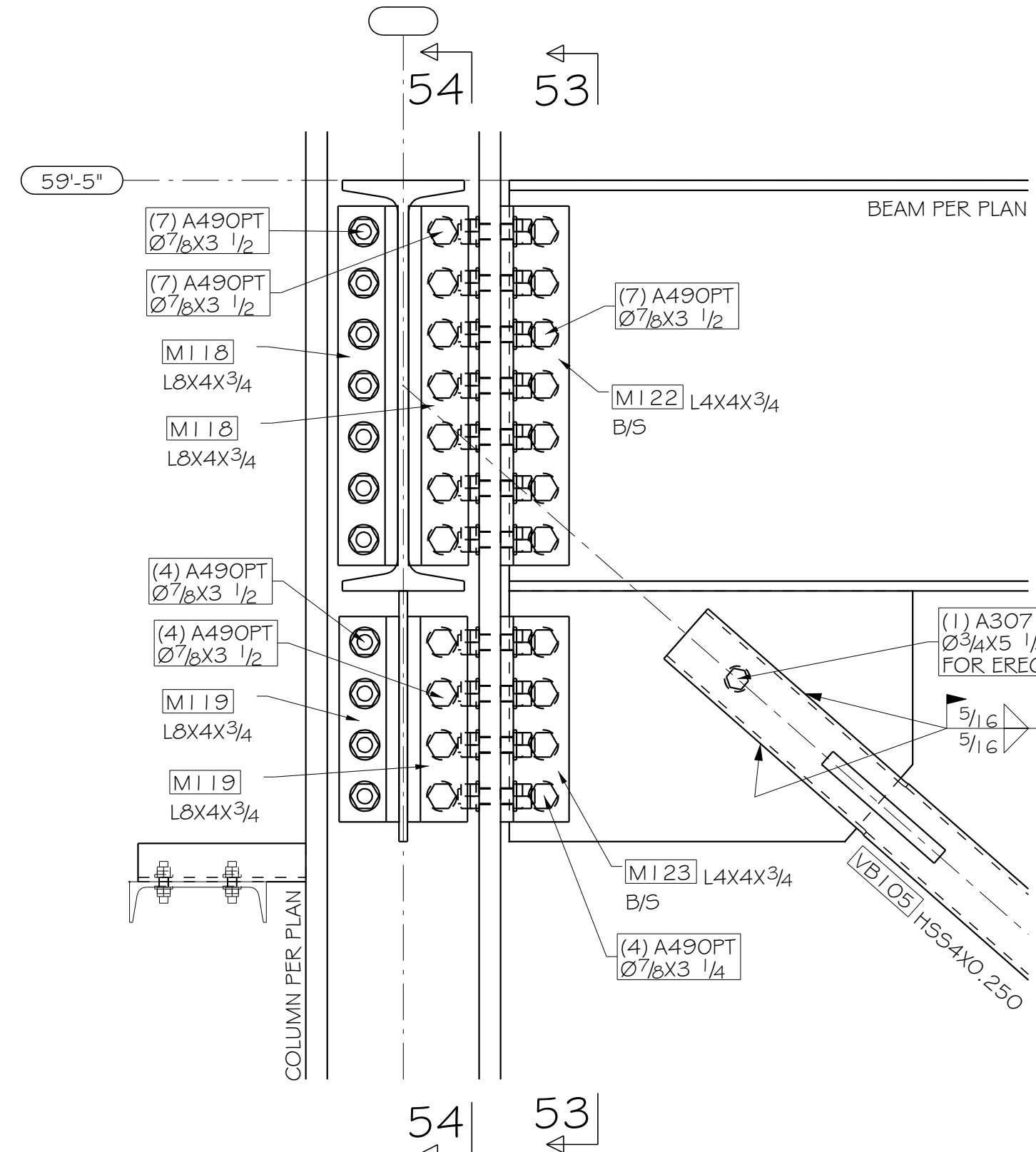
51 - 51  
APPROVER VERIFY WELD TYP



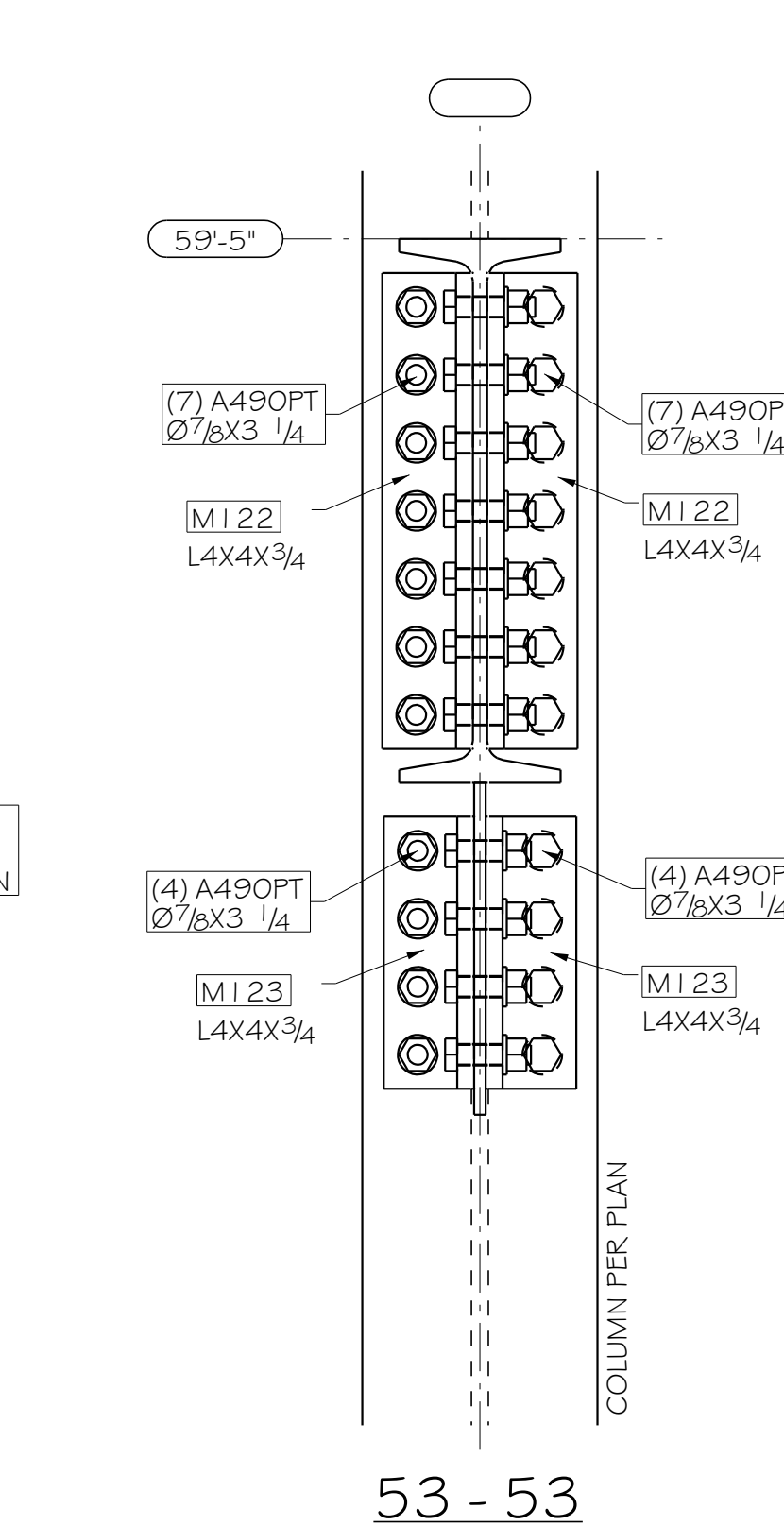
52 - 52  
REF: 5/57.53



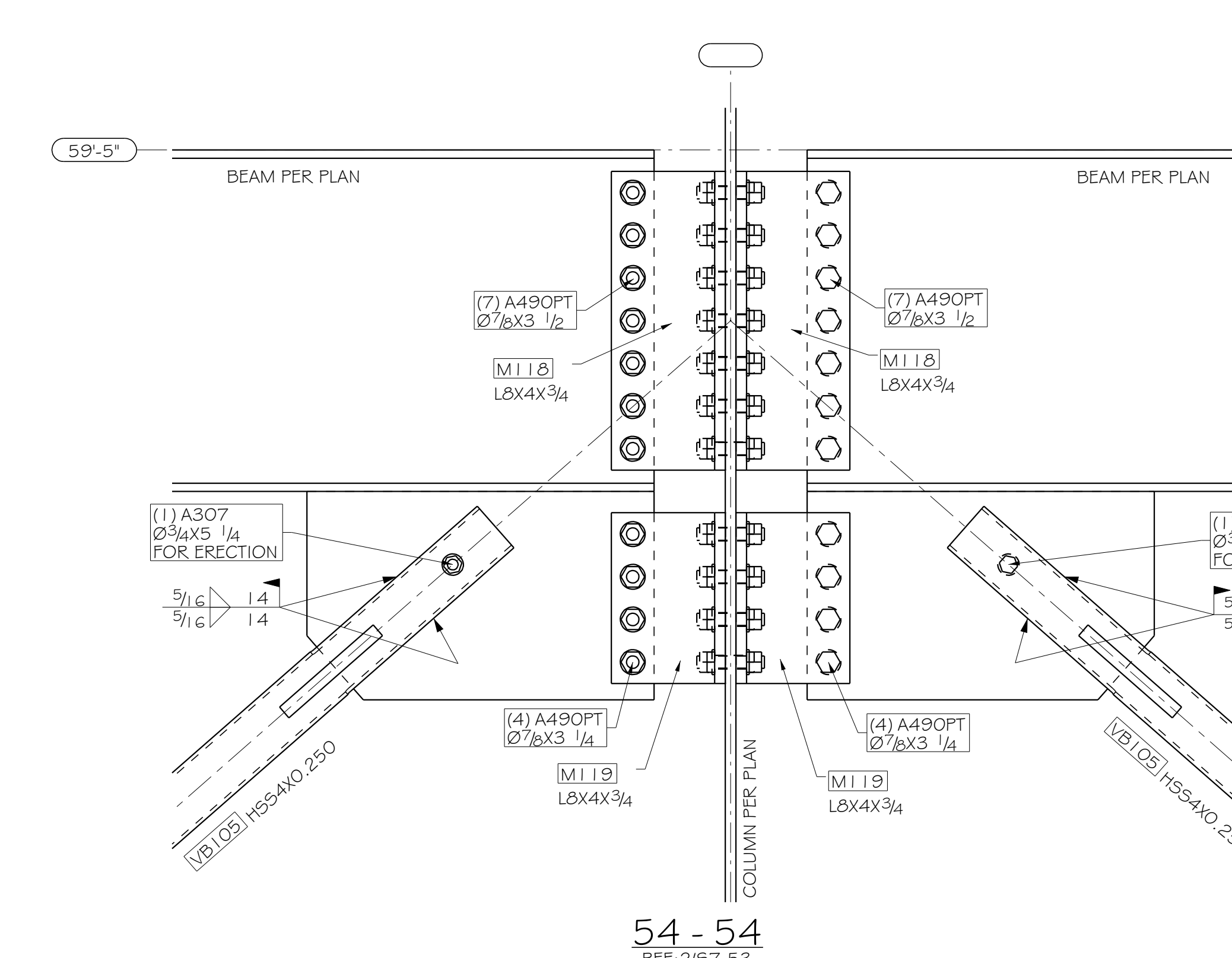
DET. 5  
REF: 3/57.53



DET. 4  
REF: 1/57.53



53 - 53



54 - 54  
REF: 2/57.53

REV.	DATE	DESCRIPTION	BY
A	06/18/2018	FOR APPROVAL	OZ
<p>ERECTOR NOTE: A490PT BOLTS - A490 FULLY PRETENSIONED BOLTS.</p> <p>VERIFICATION OF DIMENSIONS, DETAILS AND ETC. ARE REQUESTED, WHERE INDICATED. IF EACH VERIFICATION IS NOT NOTED OTHERWISE, IT WILL BE ASSUMED TO BE CORRECT AS SHOWN.</p> <p><b>STEEL MANAGEMENT SERVICES, LLC</b> 707 COLORADO ST KESLO, WA 98625 360-518-8560</p> <p>DETAILER: PB STEEL DETAILING, INC    ENGINEER: JHI ENGINEERING, INC    CUSTOMER: JHI KELLY PROJECT: PELETIZING PLANT LOCATION: 300 NORTH PEKIN ROAD, WOODLAND, WA 98674</p> <p><b>DETAILS</b></p>			
DRAWN BY:	CHKD. BY:	JOB No.:	SHEET No.:
VM	PB	248	E-11
REV.:	A		